

C

M

P

S

S

AKASA

COMPASS 





LIMASSOL, CYPRUS

Crafting Prime Properties Since 2002. Recognized as a leading developer in Cyprus's premium real estate market, we are led by an experienced and forward-thinking team whose vision is to become the most trusted and innovative property developer in Cyprus.

PROPERTY
DEVELOPMENT

We offer a comprehensive range of real estate services, covering everything from design and build to property management. We ensure exceptional properties in prime locations, with commitment to seamlessly integrating quality, design, and innovation means we make no compromises on quality.

THE COMPANY

AKASA is a prestigious residential building that harmoniously blends modernity and elegance in its contemporary architecture. Designed to enhance your lifestyle, this exceptional property shines in one of the city's most sought-after neighborhoods. It features 21 refined 2- and 3-bedroom apartments spread across 3 floors. Each unit boasts spacious sliding doors that open into expansive verandas, flooding interiors with natural light and offering stunning panoramic views of Limassol's coastline and cityscape.

The building includes a fully equipped gym, a communal pool area surrounded by lush landscaping, and comfortable loungers, adding both charm and value to the development. Embracing sustainability, AKASA integrates energy-efficient solutions to provide a sophisticated living experience while reducing its ecological footprint for residents.

Type:	Residential
Location:	Panthea, Limassol
Status:	Under Construction



THE PROJECT



AKASA

KEY FEATURES



- Prime Location
- Stunning Panoramic Views
- Contemporary and Elegant Design
- Two- and Three-bedroom Apartments
- Communal Gym and Swimming Pool
- Two parking spaces for each apartment in a secure gated area
- Private Roof gardens for top-floor apartments
- A-class energy efficiency building
- Smart home technology

*All 3D images are based on conceptual models that help to visualize and interpret the project.



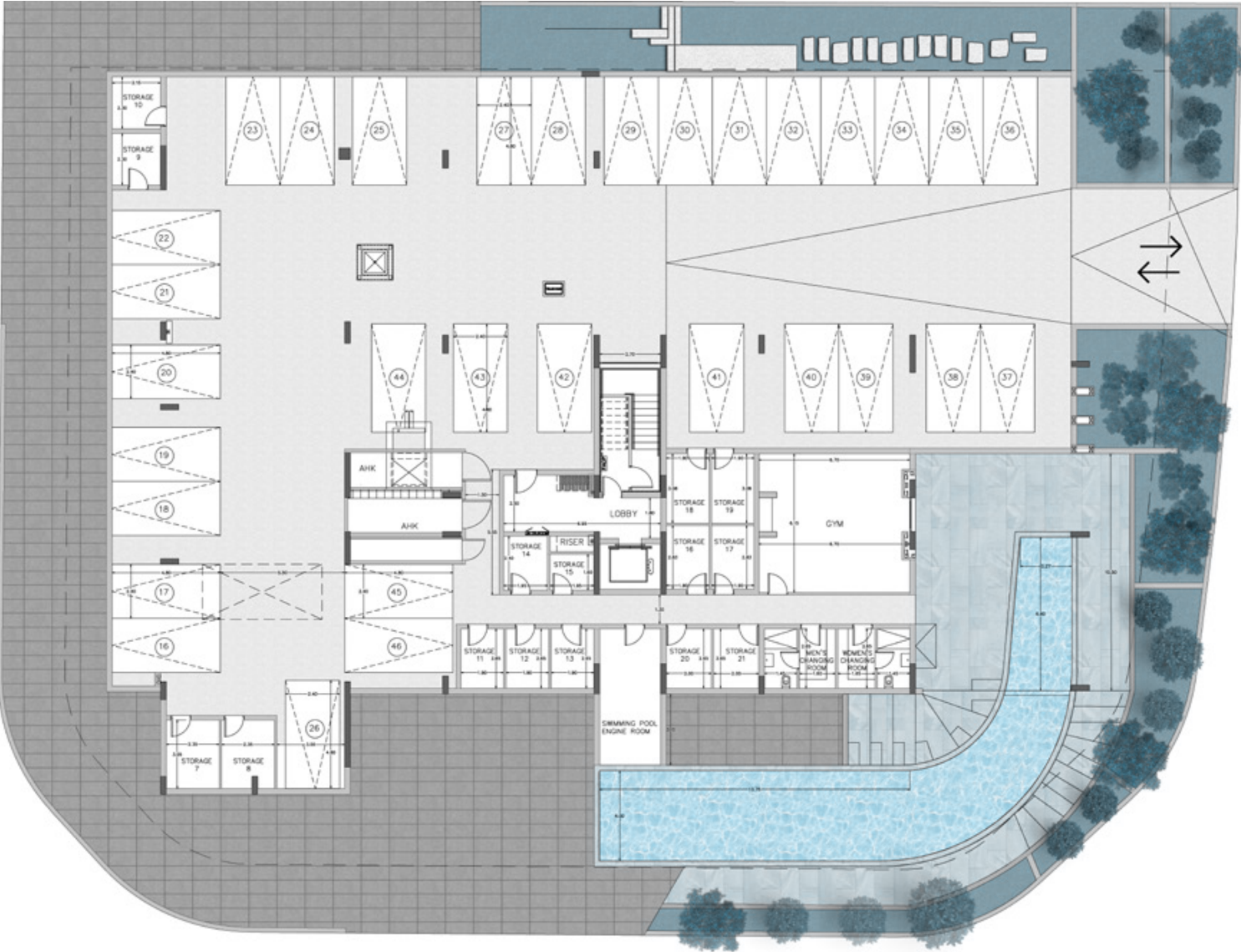


AKASA



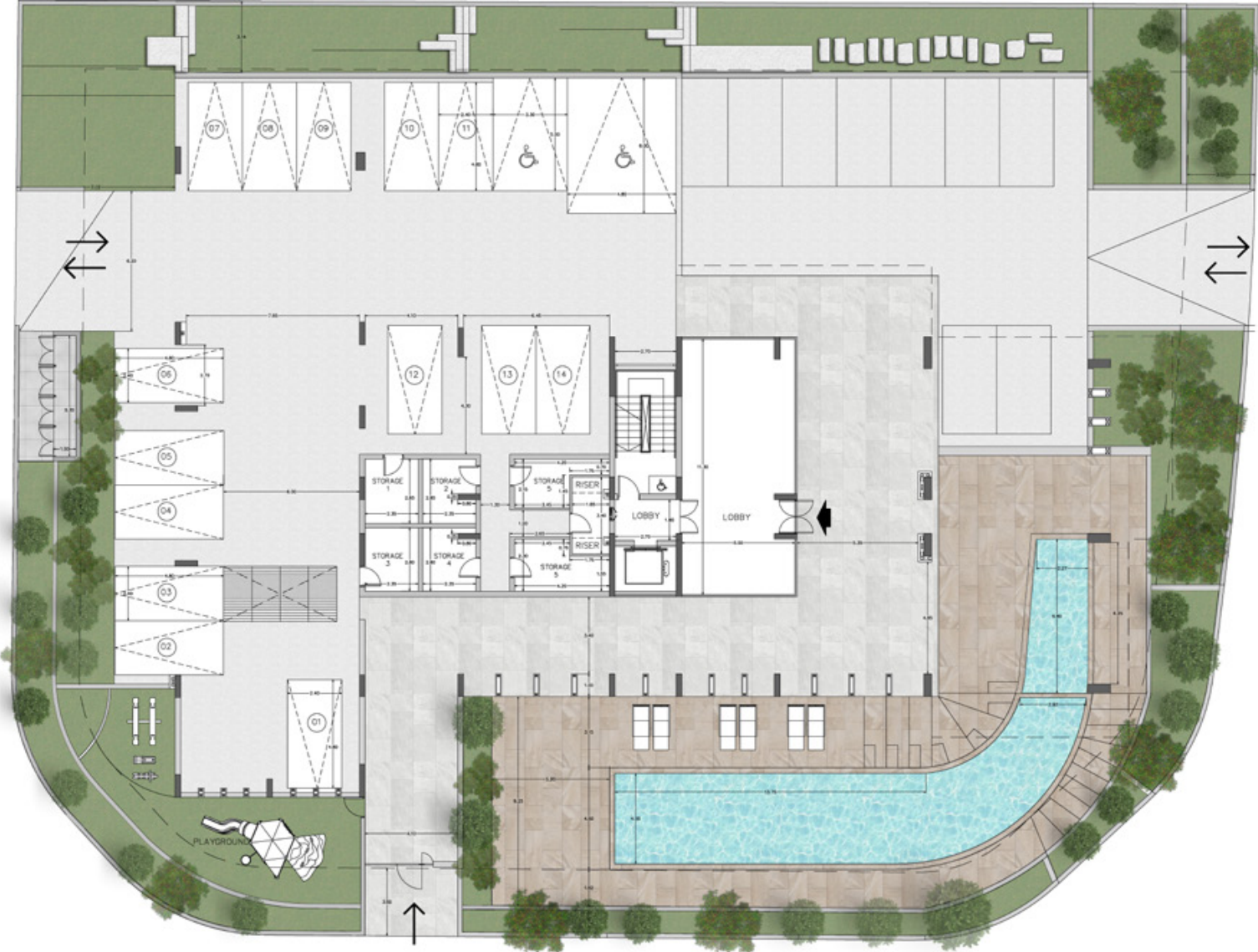
FLOOR PLANS

BASEMENT FLOOR



FLOOR
PLANS

GROUND FLOOR



AKASA AVAILABILITY & PRICES | FIRST FLOOR

FLAT NO.	FLOOR	NO. OF BEDROOMS	PARKING SPACES	STORAGE ROOM	FLAT AREA (sqm)	COVERED VERANDAS (sqm)	UNCOVERED VERANDAS (sqm)	COMMON AREAS (sqm)	TOTAL AREA(sqm)
1	1 st	2	2	1	87	19	–	15	121
2	1 st	2	2	1	87	19	–	15	121
3	1 st	2	2	1	88	25	–	15	123
4	1 st	2	2	1	88	21	5	15	129
5	1 st	2	2	1	87	25	–	15	122
6	1 st	2	2	1	87	27	–	15	129
7	1 st	3	2	1	119	35	–	21	185

1. VAT is not included in the above prices.

2. Parking spaces and a storage room are included in the price

3. The area for the parking places and storage rooms are over and above apartments total area

4. Three bedroom apartments (No.7 -14-21) include photovoltaic system approximately 5kWp.

*The above prices are subject to change without prior notice at the discretion of the Company

AKASA AVAILABILITY & PRICES | SECOND FLOOR

FLAT NO.	FLOOR	NO. OF BEDROOMS	PARKING SPACES	STORAGE ROOM	FLAT AREA (sqm)	COVERED VERANDAS (sqm)	COMMON AREAS (sqm)	TOTAL AREA(sqm)
8	2 nd	2	2	1	87	18	15	120
9	2 nd	2	2	1	87	19	15	121
10	2 nd	2	2	1	88	20	15	122
11	2 nd	2	2	1	88	19	15	122
12	2 nd	2	2	1	88	27	15	129
13	2 nd	2	2	1	88	20	15	123
14	2 nd	3	2	1	119	45	22	182

1. VAT is not included in the above prices.

2. Parking spaces and a storage room are included in the price

3. The area for the parking places and storage rooms are over and above apartments total area

4. Three bedroom apartments (No.7 -14-21) include photovoltaic system approximately 5kWp.

*The above prices are subject to change without prior notice at the discretion of the Company

AKASA AVAILABILITY & PRICES | THIRD FLOOR

FLAT NO.	FLOOR	NO. OF BEDROOMS	PARKING SPACES	STORAGE ROOM	FLAT AREA (sqm)	COVERED VERANDAS (sqm)	PRIVATE ROOF GARDEN (sqm)	COMMON AREAS (sqm)	TOTAL AREA(sqm)
15	3 rd	2	2	1	87	22	48	20	179
16	3 rd	2	2	1	88	22	43	20	174
17	3 rd	2	2	1	87	21	43	20	169
18	3 rd	2	2	1	87	23	43	20	178
19	3 rd	2	2	1	87	22	43	20	169
20	3 rd	2	2	1	87	25	43	20	177
21	3 rd	3	2	1	119	33	65	28	258

1. VAT is not included in the above prices.

2. Parking spaces and a storage room are included in the price

3. The area for the parking places and storage rooms are over and above apartments total area

4. Three bedroom apartments (No.7 -14-21) include photovoltaic system approximately 5kWp.

*The above prices are subject to change without prior notice at the discretion of the Company

LOCATION

LIMASSOL UNVEILED: DISCOVER THE VIBRANT SURROUNDINGS

Beach	3km
Shops	0.5km
Schools	0.1km
City Centre	1.5km

AKASA, our newly designed project, will be located in one of Limassol's prime locations, Panthea. The building's contemporary design and elegant layout will add beauty to the neighbourhood. The building will accommodate luxurious 2- and 3-bedroom apartments with limitless natural light and unforgettable views of Limassol's coastline and city. A fully equipped gym and a communal swimming pool will add comfort and luxury to all residents.



NOTES

AKASA

COMPASS 

C

M

P

S

S